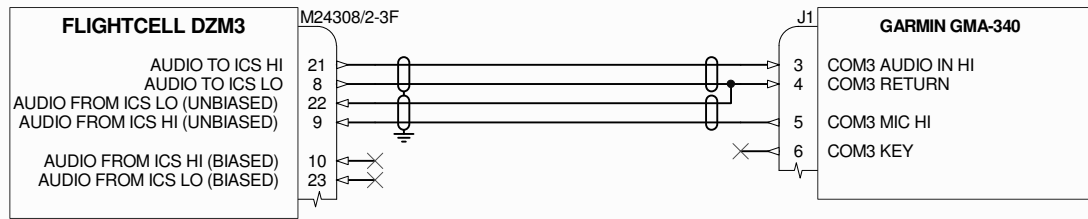


DZM3 Interconnect Wiring Diagrams

Transceiver ICS Interconnections with GMA-340

Where possible, a dedicated COM channel should be used - this is more intuitive for the operator and is most versatile in that each headset can be switched in and out for both incoming and outgoing audio.

Note that the unbiased DZM input is recommended when connecting to a COM port, but the biased input is preferred when connecting directly to a microphone. For high impedance systems (used on most GA aircraft) the microphones require a bias voltage to activate them; this may be provided by the ICS but the DZM is able to provide its own bias voltage if required.



NOTES:

1. ALL POWER CABLES SHOULD BE 22AWG STRANDED UNLESS OTHERWISE NOTED e.g. M22759/34-22-9
OTHER CABLES SHOULD BE 22AWG STRANDED, SCREENED WHERE INDICATED e.g. M27500/-24SB2T14.
2. IT IS RECOMMENDED THAT THE POWER GROUND CONNECTIONS BE RUN
3. SYMBOL DESIGNATIONS

SHIELDED PAIR
SHIELD TERMINATED TO DC GROUND

SHIELDED PAIR
SHIELD FLOATING

UNIT GROUND



Flightcell International Limited
PO Box 1481, Nelson, New Zealand
Ph: +64 3 545 8652 www.flightcell.com

Product:	Flightcell DZM3		
Sheet:	Transceiver ICS Interconnections1 of 1		
Issue:	1.0		
Drawn By:	James Glasgow		
Filename:	Transceiver ICS Connections.SchDoc		
Date:	19/06/2012 Drawing No: WRL_DZ3_003		
1.0	Document created (C/N FCN0224)	20/06/11	JG
REV	DESCRIPTION	DATE	APPD