



Flightcell[®] DZM Bootloader

For use with DZM2 and DZM3 products

Installation and Operation Manual

www.flightcell.com



Registered in U.S. Patent and Trademark Office

Version history

Issue	Date	Author	Description
Version 1.0	01 Dec 2010	H. Twissell	Document created (FCN0138)

Contents

Version history	2
Contents	2
Introduction	3
Installation	4
System Requirements	4
Installing the DZM Bootloader	4
Contact details	7
Flightcell® International contact details	7
User notes	8

Introduction

This document will cover the installation and use of the Flightcell DZM Bootloader into DZM2 or DZM3 (DZM2 with integrated LBT) equipment. From here onwards, both DZM2 and DZM3 units will simply be referred to as DZM. The Flightcell DZM requires two pieces of firmware to be installed, the bootloader firmware and the application firmware. The bootloader firmware must be installed to facilitate the loading of the application firmware. For all new DZMs, this operation is performed before the DZM leaves the factory, although there are a number of early units that do not have a bootloader installed. If you are simply wanting to upgrade your DZM, and your current firmware version is v3.110 or later, then you only need to upgrade the application firmware and this manual is not for you! Please refer to the DZM Manager documentation for instructions on how to upgrade your DZM with the new application firmware. If however, your current firmware version is 3.109 or earlier then read on...

Installation

System Requirements

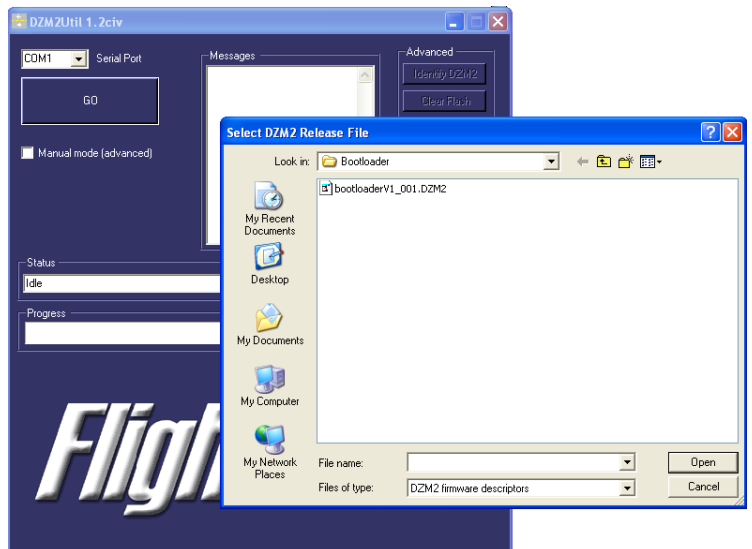
To install the bootloader into a DZM, you will need:

- A laptop or PC with a native, or PC card, 9 pin serial port (not a serial/USB adapter. These wont work) running Windows XP or 2000 with .NET 2.0 and .NET 2.0 service pack 1 (SP1) installed. If required, the .NET framework can be downloaded from the Microsoft website if not already installed.
- A serial cable connected between the PC and the DZM serial port (blue connector on the wiring loom or directly into the bottom connector at the back of the unit if upgrading a DZM3).
- DZM2Util firmware upgrade utility installed on to the PC. The installation files for this application are located on the installation CD in the 'DZM2 utilities' directory. Run setup.exe and follow the prompted instructions.

Installing the DZM Bootloader

- Connect your PC to the DZM's data connection using a serial-serial cable.

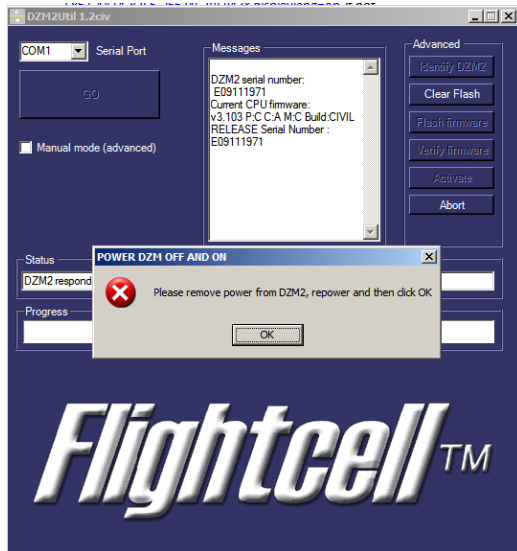
- Turn aircraft power on and check that the DZM powers up.
- Open the DZM2Util utility.
- Select the COM port for the PC connection.
- Now click "GO"; the program will show a popup asking you to select the DZM firmware file.



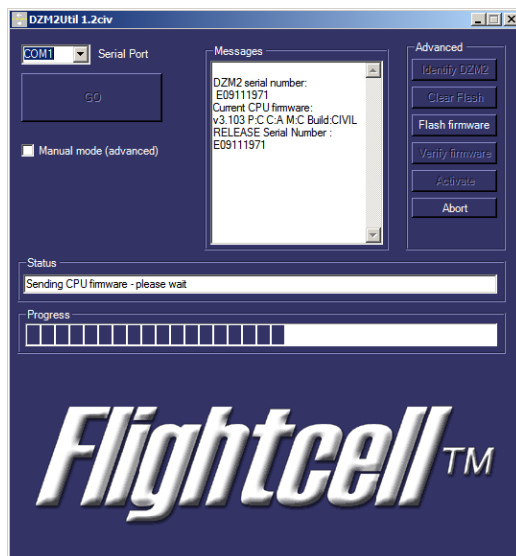
- Navigate to the folder where the firmware files are located. There should be two files, bootloaderVx_xxx.DZM2 and bootloaderVx_xxx.bin in that directory, but the DZM2Util will only show the bootloader configuration file with the .DZM2 extension. Select bootloaderVx_xxx.DZM2 and then click Open.

| Installation

- When prompted, turn aircraft power off, wait for 5 seconds, and then turn it on again; the DZM display will go blank – this is normal.



- Once the aircraft power is on again, click OK.
- The DZM will now load and verify the firmware, then activate; progress on each of these steps is shown by the progress bar.

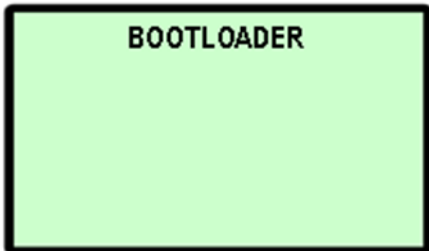


| Installation

- Once completed, the DZM will restart, and the utility can be closed.



The firmware upgrade will normally take about a minute. The bootloader should now be running and the DZM display will show:



You can now use the DZM Manager utility to install the latest application firmware. Please refer to the DZM Manager Users Guide for details and instructions.

Contact details

Flightcell® International contact details

Flightcell® International Ltd

PO Box 1481

98 Vickerman Street

Nelson 7040

New Zealand

Telephone +64 3 5458651

Fax +64 3 5488091

Email admin@flightcell.com

Website <http://www.flightcell.com>

User notes