

Flightcell SmartHUB

Cockpit Video, Audio, Flight Data Recorder and Access Point

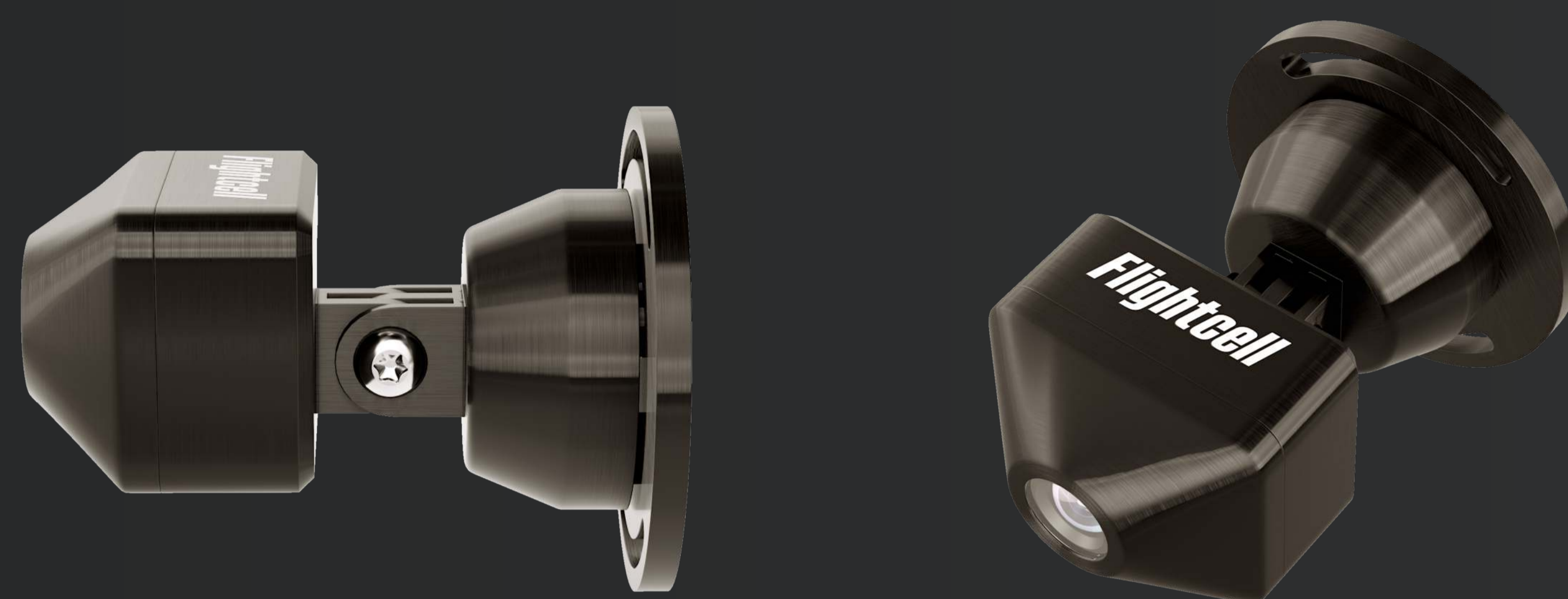


Flightcell SmartHUB is the perfect tool to meet requirements for mandatory cockpit recording for government and public sector rotorcraft operators.



Explore Flightcell SmartHUB

The Flightcell SmartHUB & Camera is a cockpit, audio flight data recorder, and access point providing connectivity to multiple onboard devices.



Flightcell SmartHUB

- Hardened internal removable SD card slot
- WiFi and GPS antenna connectors
- Ethernet switch and USB hub (with charging options)
- Various cockpit & remote mounting options
- Installed under local modification (minor change)
- Standalone unit or can be paired with Flightcell DZMx to provide a powerful network and internet gateway

Flightcell Camera

- Rugged and compact design
- Install in the cockpit, and for second camera (if required) aircraft cabin
- Strong mountable swivel bracket
- HD video recordings
- Embedded mic for ambient cockpit audio recording

A solution across several industries

Aerial Fire



Air Medical



Search and Rescue



Law Enforcement



VIP



Flight Training



SmartHUB Flight Viewer Software

Dedicated SmartHUB Flight Viewer software allows you to view and analyze recordings post flight (no subscription required).



Explore Flightcell SmartHUB