

Flightcell[®] SOFTWARE DEFINED RECEIVER (SDR)

Introducing Software Defined Receiver (SDR), the latest tactical enhancing feature to the Flightcell DZMx. Monitor any radio frequency from 25kHz to 2GHz.



Software Defined Receiver (SDR) provides greater situational awareness and locator capabilities

Software Defined Receiver (SDR) provides greater situational awareness and locator capabilities.

Flightcell SDR

Monitor radio frequencies between 25kHz to 2GHz ✓

Install on new or existing Flightcell DZMx or DZMx PLUS ✓

Control wirelessly (Connect Radio App) or on unit ✓

Connect to Foreflight or OzRunways EFB apps ✓

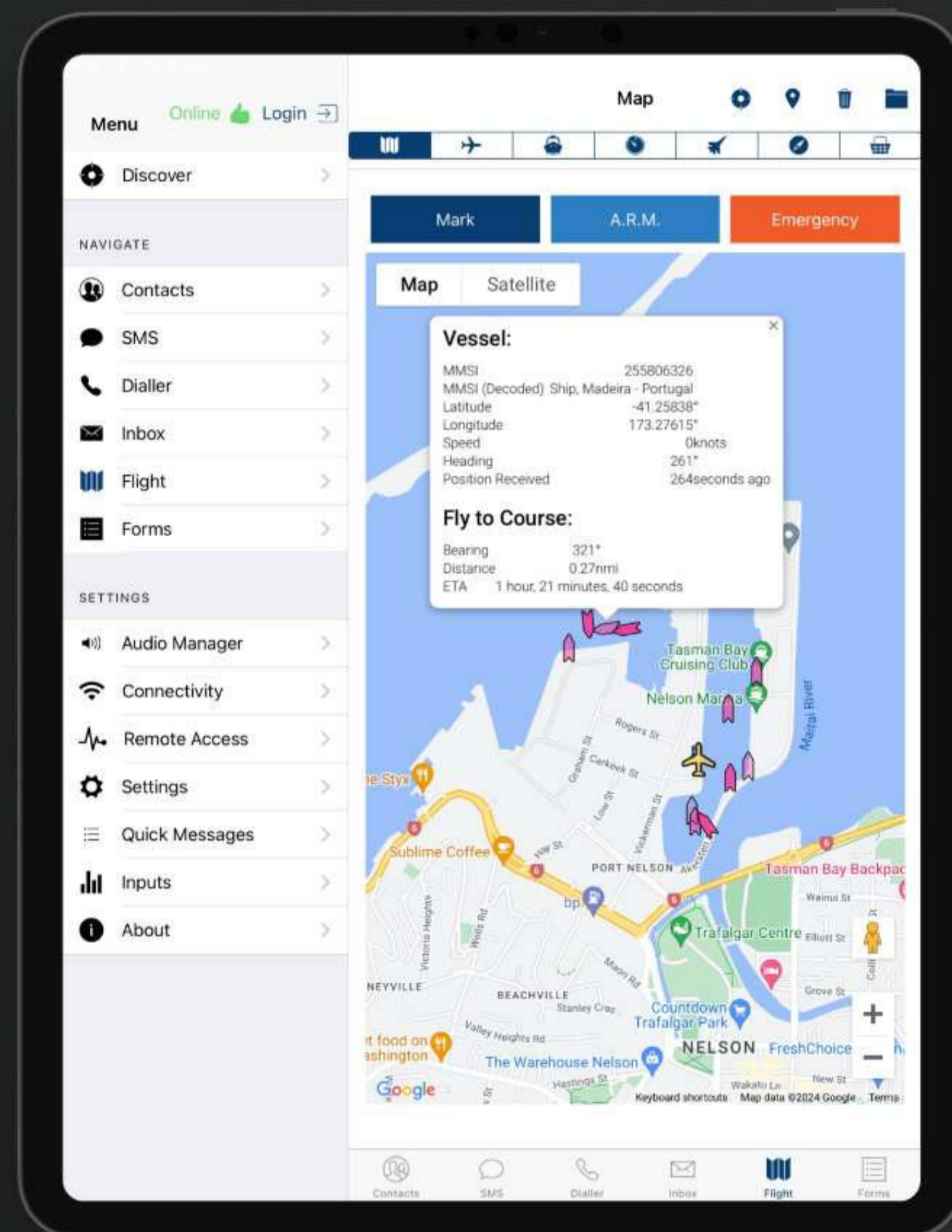
Connect to iNavX iOS app, or DZMx Connect app, on EFB to view maritime AIS vessel info ✓

Receive ATIS information, marine channel 16 or VHF121.5 MHz ✓

Listen to your favorite radio station and monitor company frequency ✓

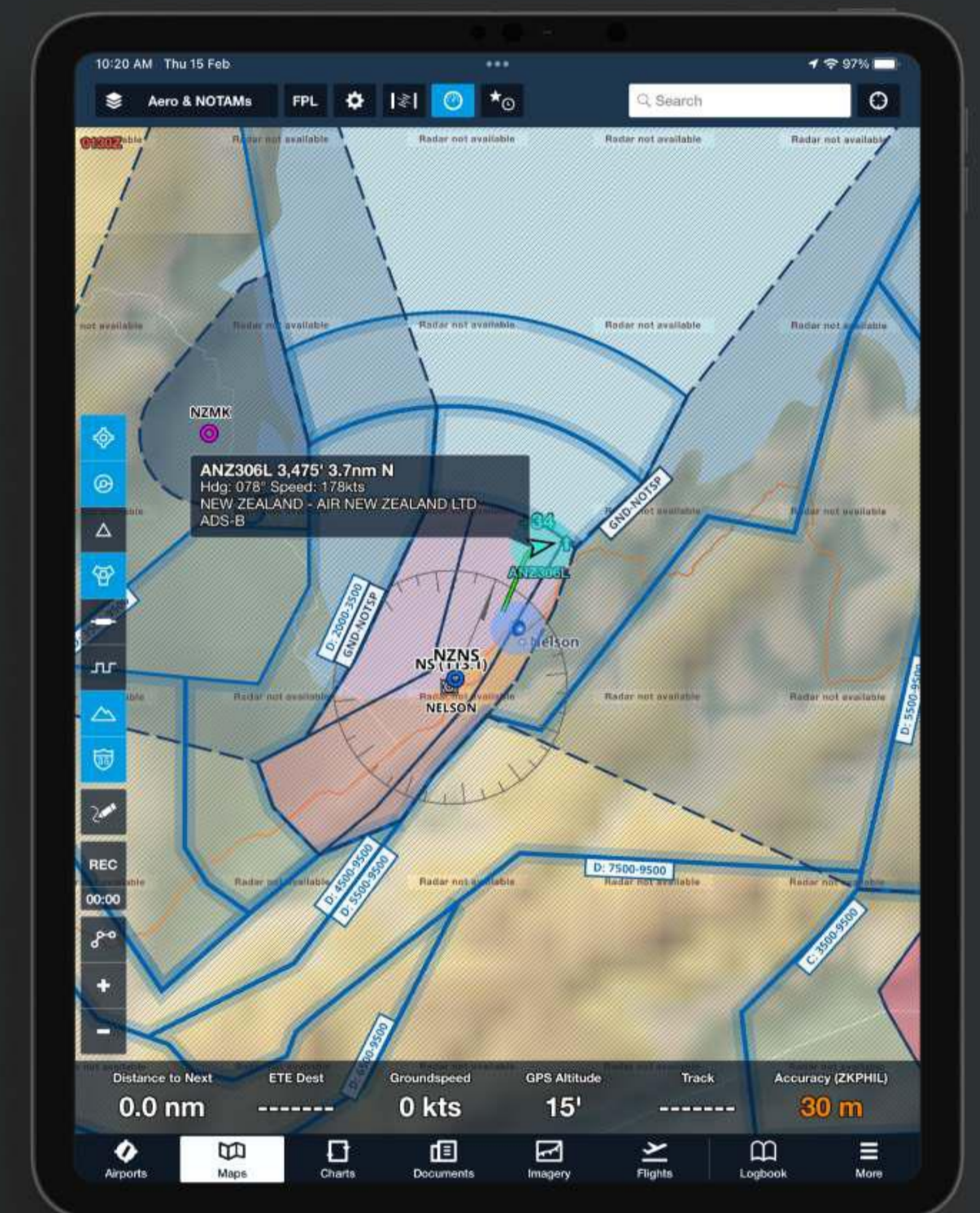
Marine AIS - Vessel Locator Capability

AIS info is received on 162.0 MHz and is displayed on the DZMx Connect moving map.



Enhance Situational Awareness

Connect wirelessly to your EFB and display ADS-B IN or UAT traffic on Foreflight or OZRunways EFB apps.



SDR Frequency Support

Flightcell Software Defined Receiver (SDR) currently receives AM / FM / NBFM frequencies, ADS-B IN 1090 MHz & AIS 162.0 MHz with further frequencies being added as per customer requests.



Explore Flightcell DZMx

VERSION 1.0

Flightcell
Always Connected

Phone: +643 545 8651 (New Zealand)
+46 735 262101 (Europe)

Email: info@flightcell.com
Online: flightcell.com